

v.01.18

## Implementing Juice Goose Ethernet-Controlled Power Conditioners with Symetrix DSPs

This document describes an easy method for controlling select Juice Goose iP-series power management devices from any Symetrix Composer-based DSP. Using the Super-modules included in Composer 5.6 and later, it is possible to control each outlet individually, all at once, and sequence each up or down. In addition, any standard Composer control can be used to trigger the power conditioner, such as:

- ARC remote wall panels
- ARC-WEB
- SymVue
- Control Server
- Preset recall
- Event Scheduler
- External Control Inputs (GPIO)

This Tech Tip is relevant to the following Juice Goose models:

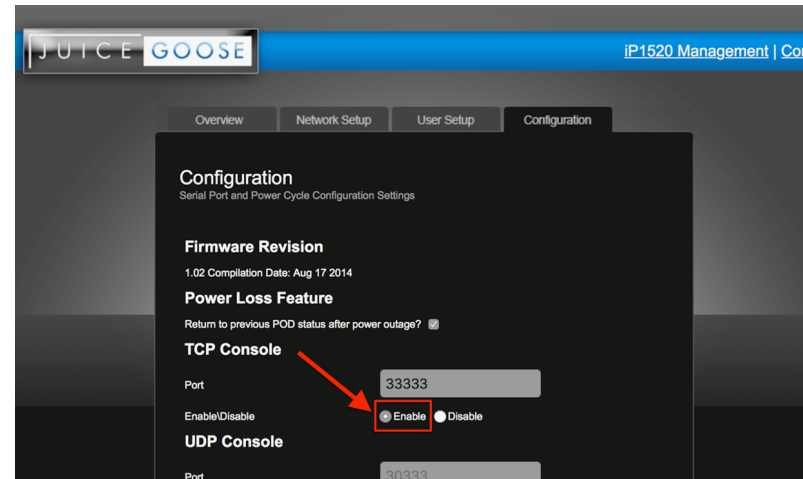
- IP 1500 Series
- IP 1
- IP PD1-4

The Super-modules can be found in the \\Documents\Composer x.x\Super-modules\examples\3rd Party Control:

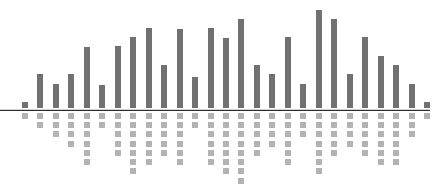
Juice Goose iP 1.smfx  
 Juice Goose iP 1500 Series.smfx  
 Juice Goose iP PD1-4.smfx

This example uses the IP 1520 model.

1. First, enable TCP control on the Juice Goose Management interface.

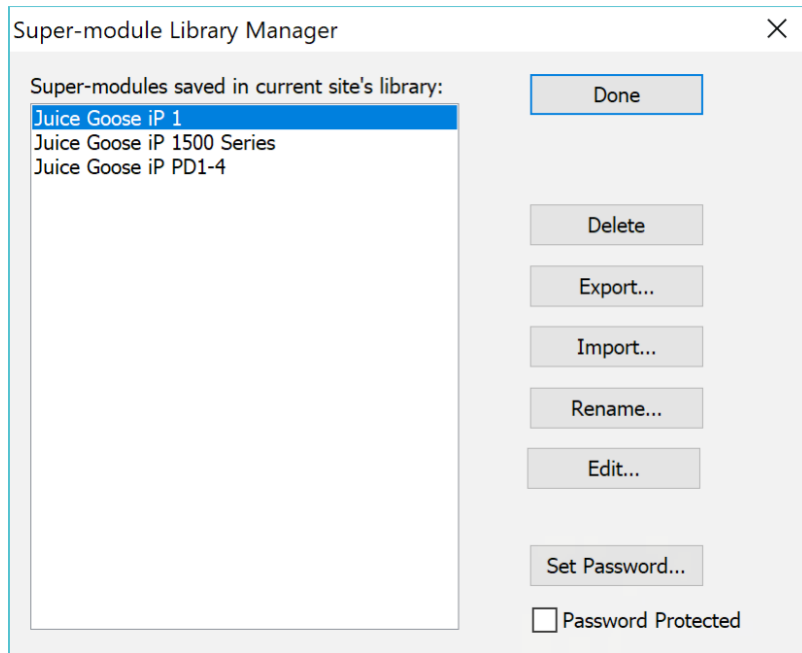


2. Make note of the Juice Goose IP address, as this will be needed in a later step. You may wish to configure a static IP for longevity in permanent installations.

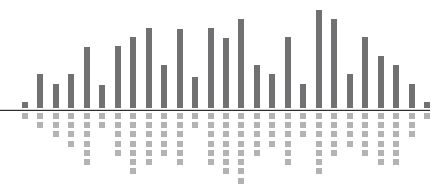
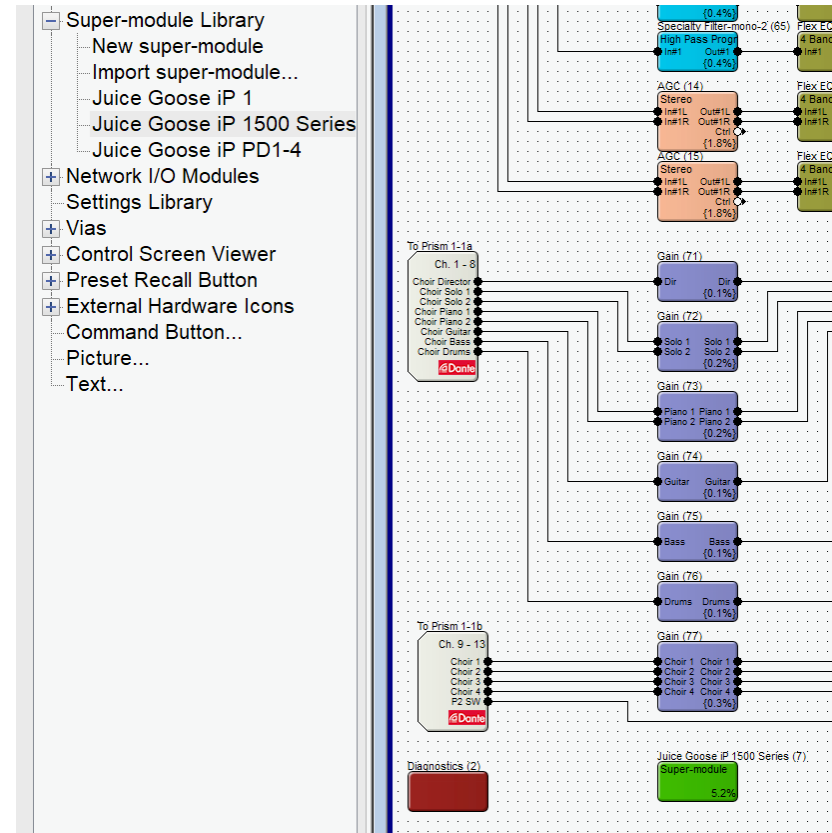


v.01.18

3. Import the appropriate Super-module into a Composer Site File.

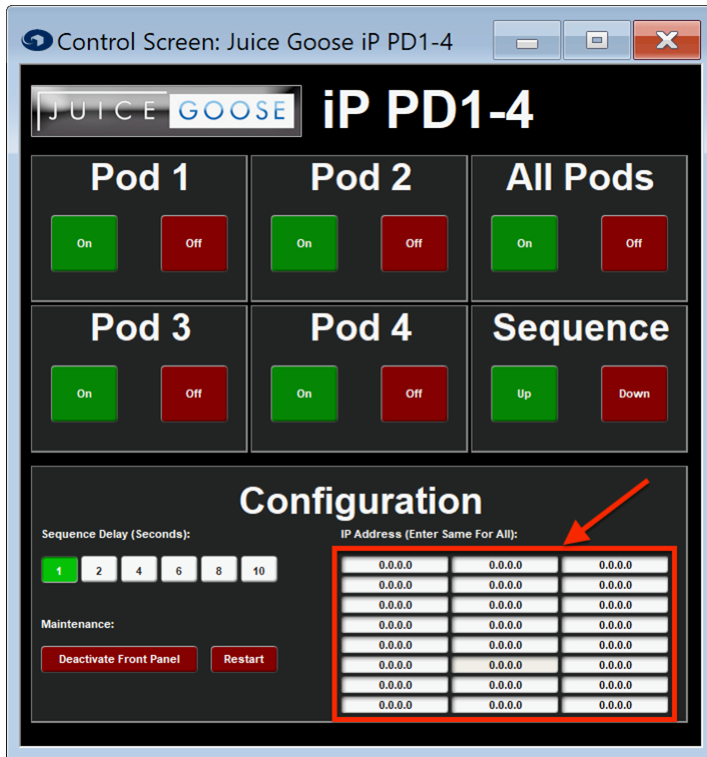


4. Add the appropriate Super-module to a Symetrix DSP's Design:



v.01.18

- 5. Double-click on the Super-module to view its user interface, and copy/paste the Juice Goose IP address into all fields (up to 24x):



- 6. Push your Site File to the system.

