

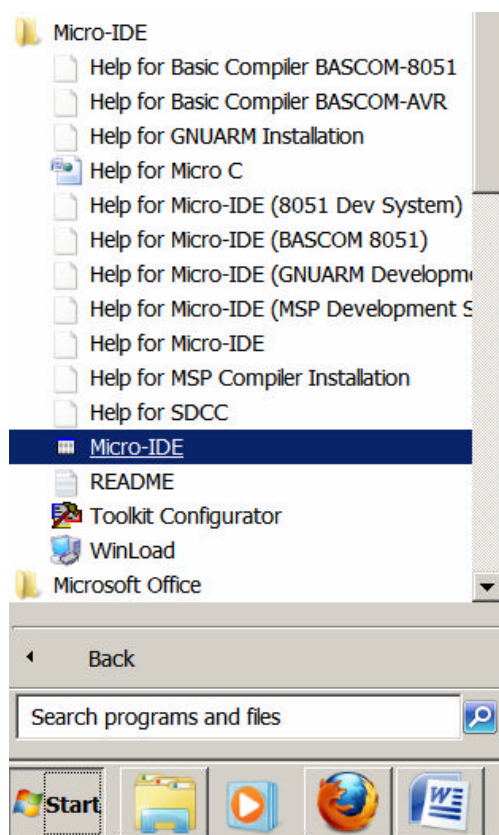


## Using iP1520 with Micro-IDE Terminal

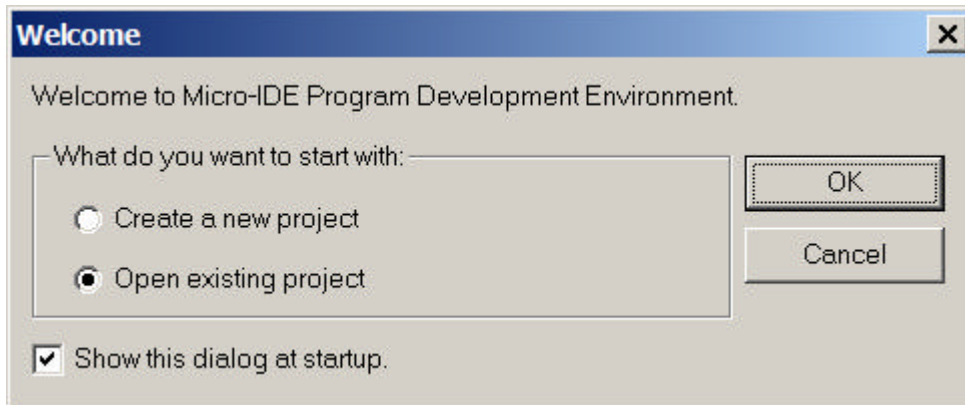
Download and install Micro-IDE terminal

[http://juicegoose.com/downloads/arm\\_devsys.exe](http://juicegoose.com/downloads/arm_devsys.exe)

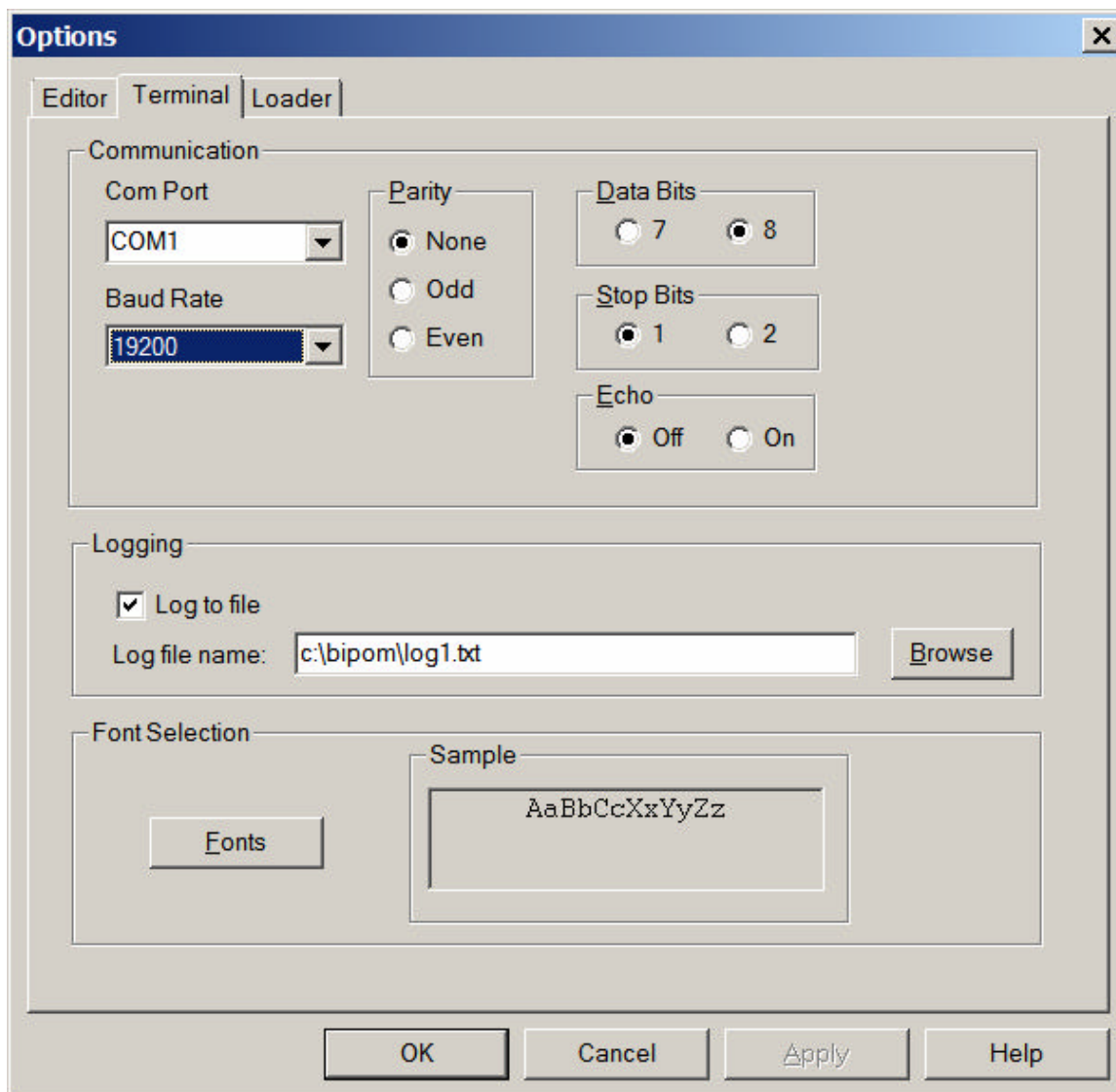
Start Micro-IDE Terminal from Windows Start menu:



Select Cancel when asked to Open or Create Project:



Go to Tools->Options->Terminal from the menu. Select COM port. Baudrate is 19200, No Parity, 9 Data bits, 1 Stop Bit, Echo is off. This needs to be done only once.

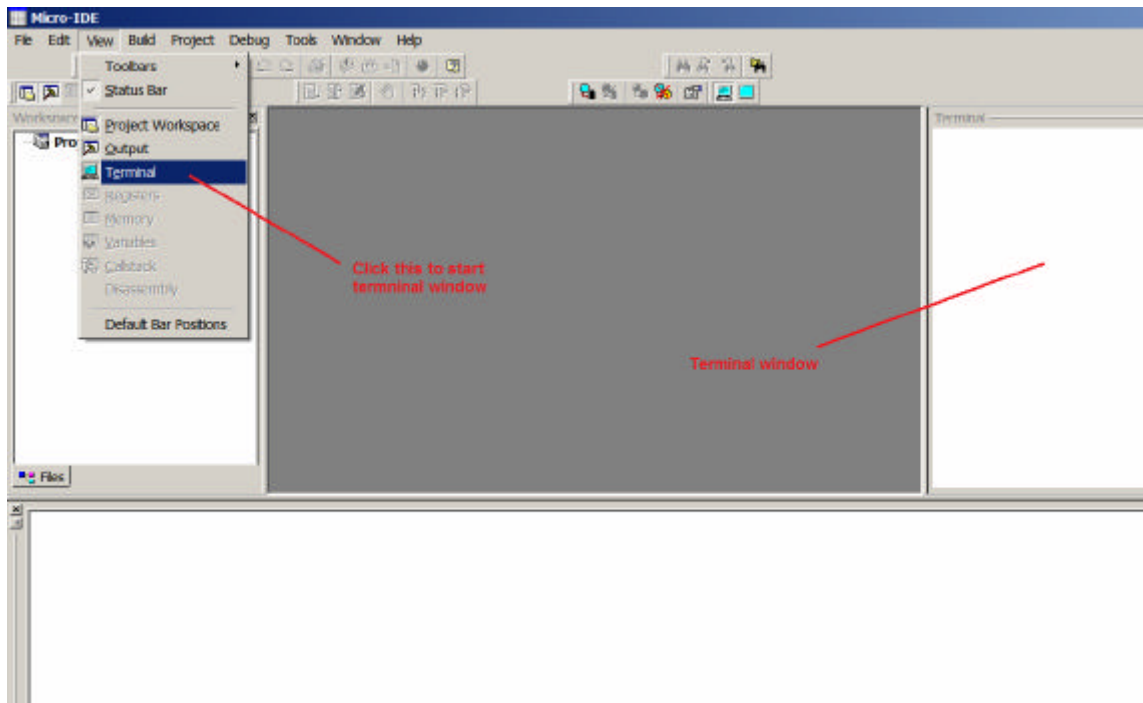


Click OK.

Connect Terminal ( This opens the COM port ) by clicking on Connect button on Terminal toolbar:



Select View->Terminal to open the terminal window:



Connect the iP1520 to computer's COM port using the provided serial cable.

Turn on power to iP1520. You should see the startup message and command prompt.

Type HELP to get a list and description of the commands available.

For additional information or assistance, call Juice Goose at 713-772-1404 or email [info@juicegoose.com](mailto:info@juicegoose.com)